



Bin Buddies Club

- game book -

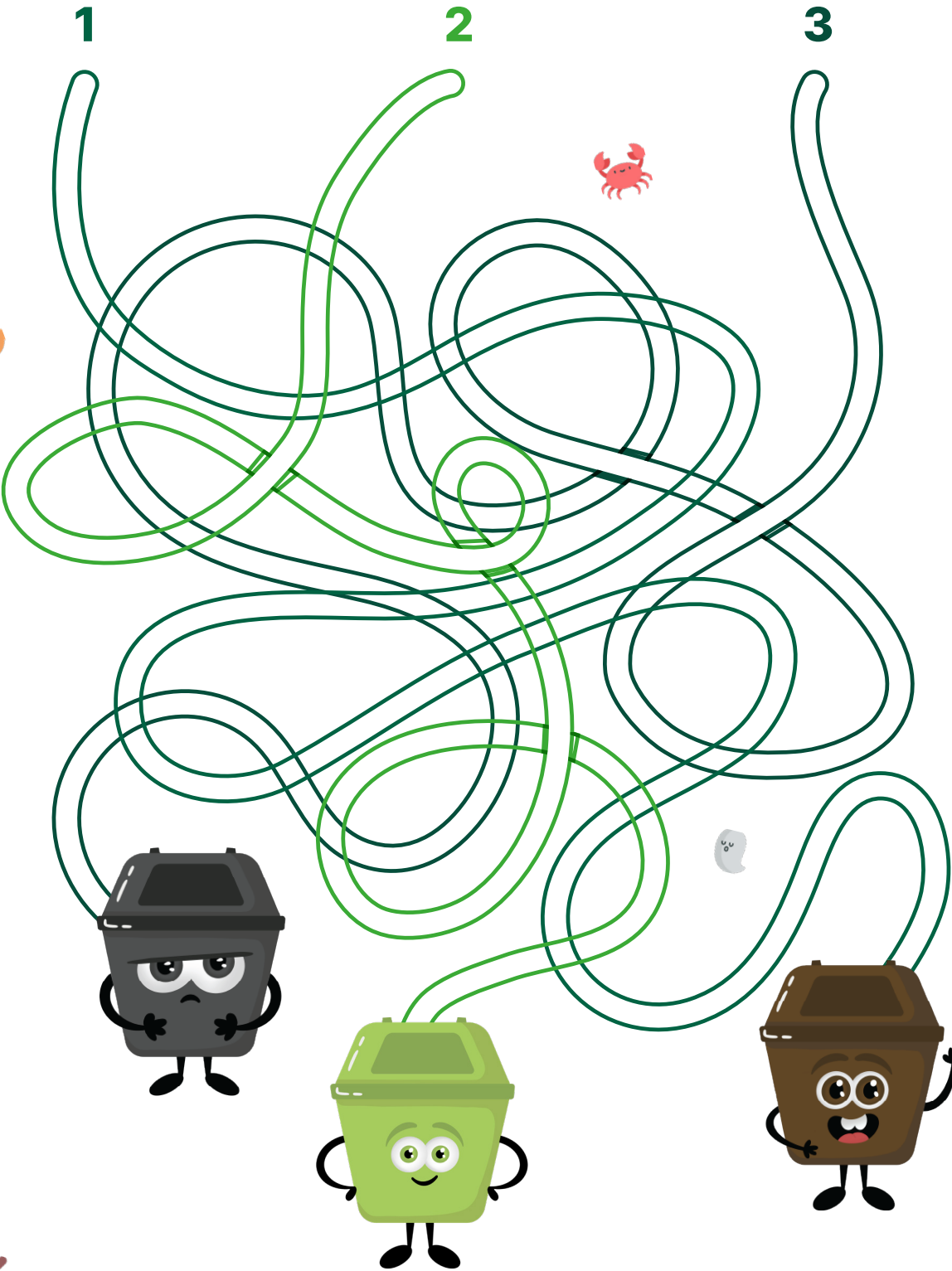


Join the Bin Buddies on their waste reducing adventures.

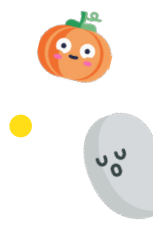
Halloween edition



Can you help the *items* find their way to the correct bin?



Can you match the rubbish to the correct bin?



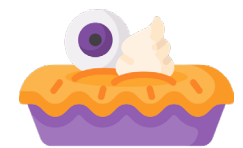
Candy paper



Glass bottle



Newspaper



Halloween Pie

Answer: Candy paper are non-recyclable and actually go in the black bin | Glass bottles go in the blue bin | Newspapers go in the green bin | Halloween Pie goes in the brown bin (but most of the time it goes in your tummy!)



Can you find the 12 hidden words?



C	E	V	S	P	F	I	Z	D	E	S	V	O	Z	T	C
I	X	M	U	B	G	E	N	X	O	Q	D	O	C	T	O
L	U	W	E	O	A	U	V	N	A	V	F	T	N	H	P
P	Y	R	P	E	O	H	R	E	D	U	C	E	J	D	L
A	E	L	E	H	C	G	C	T	D	R	M	P	X	Q	A
P	L	R	Y	U	H	X	M	V	Q	N	V	K	A	E	S
E	P	E	I	D	S	F	T	M	O	U	Z	T	C	E	T
R	R	B	I	O	D	E	G	R	A	D	A	B	L	E	I
G	K	O	D	Y	M	K	I	B	E	J	V	C	M	Q	C
C	P	R	M	N	E	V	W	Y	D	J	Y	D	W	O	Q
N	U	G	R	D	N	M	B	N	J	C	I	L	M	D	T
L	C	A	M	E	W	A	S	T	E	Y	J	Z	R	B	P
A	B	N	T	G	V	X	J	R	M	Q	S	Y	B	X	R
N	O	I	F	W	A	Y	L	Q	V	N	Z	M	R	T	U
F	D	C	N	B	F	S	Y	M	P	F	Q	M	H	E	A
C	N	A	L	J	K	B	R	T	C	O	M	P	O	S	T

Reduce

Environment

Recycle

Biodegradable

Compost

Reuse

Bin

Greyhound

Plastic

Waste

Paper

Organic

